



*Could Kaal
Sarp Dosh Be
Shaping Your
Career Path?*





Introduction

Life's journey is often guided by unseen cosmic forces that shape our success and opportunities. In Vedic astrology, Kaal Sarp Dosh is seen not only as a challenge but also as a powerful influence that can spark resilience, self-discovery, and transformation, often playing a hidden role in shaping one's career path.

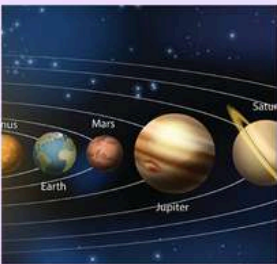
When understood with the right perspective, it may not be a barrier but rather a hidden catalyst, guiding individuals toward discovering their true potential and carving out unique paths of achievement.

Kaal Sarp Dosh Explained



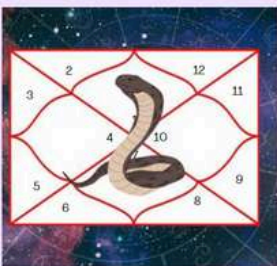
Kaal Sarp Dosh is formed when all planets are hemmed between Rahu and Ketu.

Key Aspects



Planetary Alignment

All planets are positioned on one side of the Rahu-Ketu axis, creating a powerful alignment.



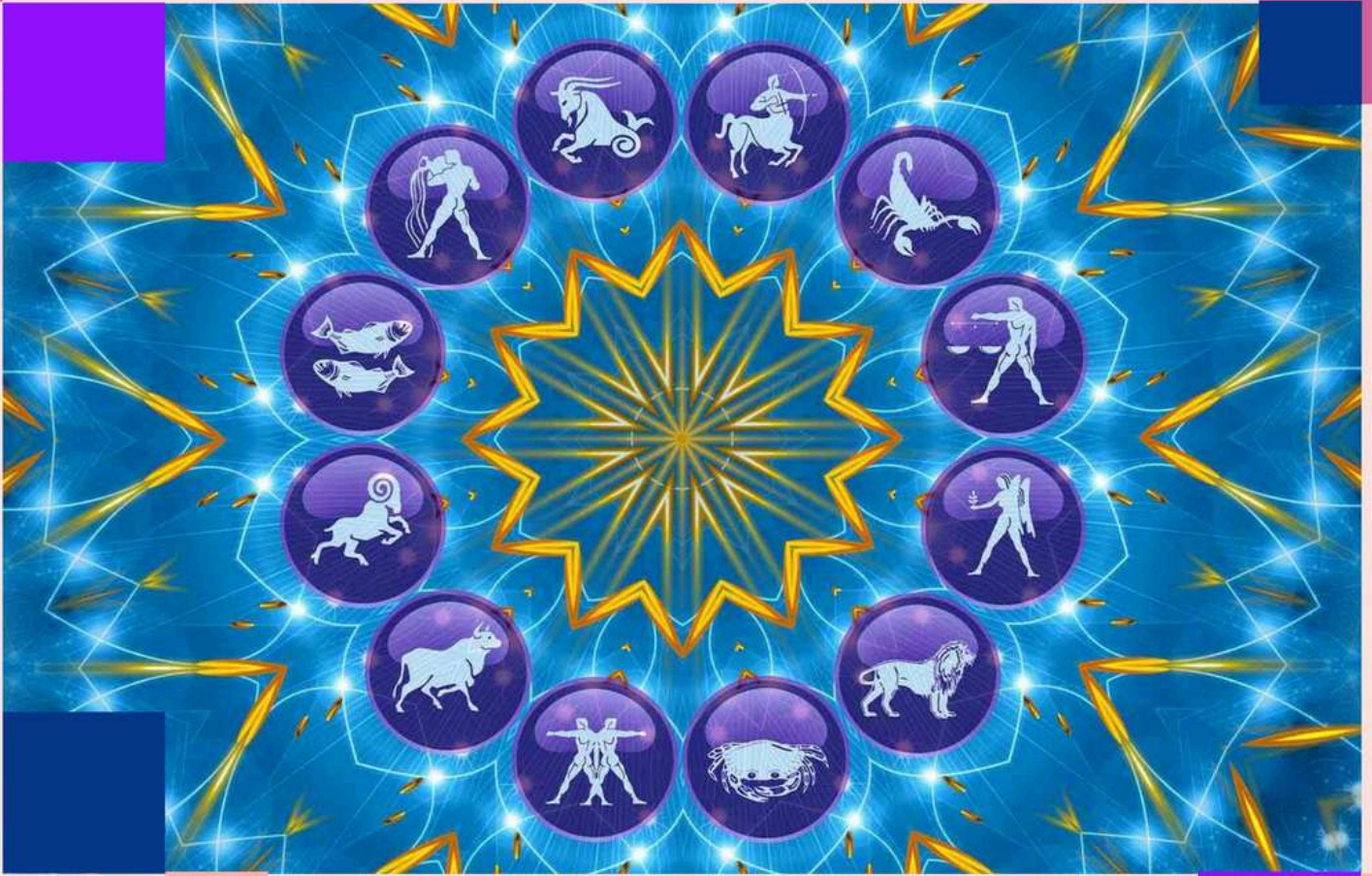
Types Vary

Depending on planets involved and their specific house positions, the overall effects can greatly vary.



Not Always Negative

Challenges exist, but it can also indicate unique strengths and potential.



Summary

While Kaal Sarp Dosh is often viewed as a challenge, it can also be a powerful catalyst for growth. By embracing remedies, self-awareness, and resilience, individuals can transform obstacles into opportunities, leading to stronger determination, clarity, and career advancement.

Over time, this journey not only builds inner strength but also aligns one's path with greater success and purpose.